

**COMMUNITY
FOOD
SHARE**

*A little giving
goes a long way*

**ANNUAL REPORT
FOR FISCAL YEAR
2013-2014**



OUR MISSION

**Community Food Share's mission
is to ensure that people in Boulder
and Broomfield Counties
are food secure.**



Flood photos courtesy of the Daily Camera

A LETTER FROM JIM

A Disaster of Unprecedented Proportions — A Community Response of Extraordinary Compassion

For so many in our community, Community Food Share included, this last year is stamped, above all, with the impact of the devastating September floods, and the aftermath — with us still today. We moved into our new facility in the Colorado Tech Center in Louisville at the beginning of August, 2013. At that point, all energies were focused on moving, setting up the warehouse, and learning how to use the significantly larger space. Staff and volunteers had their hands full — or so we thought.



But then... the floods, and the challenge of the new warehouse quickly faded into the background as we moved to an “*all hands on deck*” response to the emergency food needs of the Boulder County Disaster Assistance Centers in Boulder and Longmont, and those of our Partner Agencies on the front lines.

Our new building was spared from flooding; however, we were closed during the rains. We did reopen the following Monday, with less than full staff and our usual volunteers, but we hit the ground running! We immediately began building many more emergency food boxes, in addition to what we had on hand, coordinated emergency response efforts with local government and citizens, and began deliveries of non-perishable food to the Boulder, Longmont, Jamestown, Lyons, Allenspark and Nederland Disaster Assistance Centers. As we all moved into the recovery phase, Community Food Share staff opened our warehouse one day a week to those impacted by the floods to select the groceries they needed. In all, we distributed 600 Emergency Food Boxes, and a total of 97,500 pounds of food.

Clearly, the timing of our move could not have been more fortunate — it is because of our larger facility that we were able to respond in a meaningful way to the disaster during emergency and then recovery efforts, while still serving those in need of food assistance. As always, it is the community's support of our work, from all sectors, that enabled us to rise to the occasion, in partnership with other responders. Generous donations came in from many sources, including Ball Foundation, 9Cares Colorado Shares, and Smithfield Foods. Very soon after the floods, 9News and Rocky Mountain PBS held a telethon to raise funds for the Red Cross and the three Feeding America Colorado food banks that were impacted, Community Food Share, Food Bank for Larimer County and Weld Food Bank. This overwhelming support, along with donations of food and dollars from ongoing partners, such as The WhiteWave Foods Company, helped us meet the challenge of the floods, while continuing our regular operations.

As a community, we struggled to fathom what had happened in our most beautiful and idyllic part of the world, even as we faced the reality of lives lost, whole towns cut off, forced evacuations, and homes destroyed. *But, also as a community, we came together in an unprecedented manner, and launched a response as monumental as the disaster we faced.*

A handwritten signature in black ink that reads "Jim".

Jim Baldwin
CEO

FROM THE CHAIR

How fortunate we are to live in a beautiful, vibrant place! Such beauty comes with a price however, for our cost of living is among the highest in the nation. Amidst the affluence, it is shocking to know that there are 45,000 people living at or below the federal poverty level and many thousands more are struggling just to make ends meet.

What is the face of poverty in our community? While those who are homeless are more visible, they actually make up a small fraction of those who live in poverty. Rather, the poor in our midst are comprised of families and individuals living on minimum wage, seniors on low fixed incomes, and the unemployed and underemployed, all of whom struggle every day to pay for basic needs such as rent, utilities, transportation, and food.

It is this segment of our population, often referred to as “the working poor,” that is the quiet face of hunger in our community, and which makes up the largest percentage of clients served by Community Food Share and our partners. These clients, and those of our partner agencies, are ordinary folks in difficult situations, such as those who have lost a job, suffered a health crisis and are trying to pay mounting medical bills, or a young couple working at low-wage jobs trying to provide for their children. Perhaps they served you breakfast this morning, or cleaned your office building last night — or even both.

There are many organizations and local governments working tirelessly to alleviate hunger in our community. Community Food Share is proud to play a central role in this “safety net partnership” by providing nutritious food through a network of 48 partner agencies and our own direct service programs. In the last fiscal year Community Food Share distributed a record 8 million pounds of food, valued at \$13.7 million.

Community Food Share acquires food locally, regionally, and nationally. Food that we source locally, from grocery stores, food industry donors, farms, and community food drives, is donated. However, a significant portion of our food supply comes through national sources like Feeding America. While much of this food is also donated, it carries significant transportation costs. As these costs continue to rise, the generosity of our community takes on an even greater importance.

America produces more than enough food for all; the challenge is marshalling the resolve to ensure that no one goes hungry. We sincerely thank those who give time, talent, funds, and food to help us fulfill our mission of a food secure community and we look forward to another year of working together with our donors, volunteers, and partners so that all can share in the bounty we enjoy.

Tom Metzger
Chairman of the Board



OUR NEW HOME

We moved into our new facility in the Louisville Colorado Tech Center August 1, 2013. Going from 22,000 square feet to 68,000 square feet was quite the jump for us. Now a year later, it's just like being home. Thanks to an incredibly supportive community, we raised the necessary \$5.5 million, enabling us to completely renovate the building and to pay off the mortgage. Once again, Community Food Share is debt-free and able to devote all resources to ending hunger in our midst.



GETTING NUTRITIOUS FOOD WHERE IT'S NEEDED

FISCAL YEAR 2014 DISTRIBUTION

A RECORD

8 MILLION MEALS

1=1 meal pound 

VALUED AT \$13.7 MILLION

35%

through Direct Distribution programs

FEEDING FAMILIES

ELDER SHARE

EMERGENCY FOOD BOXES

65%

through our network of 48 Partner Agencies

Food Safety Net Partnership

Approximately 65% of total food distribution reaches people in need through a network of 48 Partner Agencies, such as food pantries, soup kitchens, shelters, residential treatment homes, and emergency food box programs. All food is distributed and delivered at no cost. As a Feeding America affiliate, Community Food Share is allowed to charge agencies a handling fee of up to \$.19/pound. We eliminated this fee in 2007, enabling the agencies to direct limited funds to other areas.



Community Food Share’s Direct Distribution Programs

Feeding Families Warehouse Distribution Program

Feeding Families is a program for families with children on the School Free Lunch program in the Boulder Valley and St. Vrain Valley school districts. These families live on \$30,000 per year for a family of four — no easy feat. Families bring their Free Lunch letter from the schools to Community Food Share, and then may come to the warehouse weekly for a cartload of groceries. Unlike most food distribution programs, Feeding Families is unique in that it is what is called “client select.” The new warehouse has allowed us to create a separate entrance and shopping area for client families. Families select the food that meets their needs in a “grocery store-like” setting, creating an atmosphere of dignity for those in need of food assistance. Because there is no charge for food, precious, limited dollars are freed up to cover other basic, urgent needs such as housing, utilities, gas, and medical expenses. It is our hope that this program can relieve some of the stressful “juggling” of resources, already stretched too thin. In FY14, 1,350 families (6,220 individuals) received 2.2 million pounds of food.



Elder Share — Now in its 26th Year

The goals of Elder Share are to ensure that low-income seniors, living on fixed incomes, have enough nutritious food to eat on a regular basis and that they do not have to choose between paying rent or health care expenses over food. Elder Share distributes sacks of nutritious supplemental groceries twice a month to over 350 members, at five sites in Boulder and Broomfield counties. Volunteers deliver food directly to those who are homebound. This food can often make the difference between food security and food insecurity for these seniors.



Emergency Food Box Program

Anyone who comes to our door in need of immediate food assistance receives an Emergency Food Box containing 25 pounds of non-perishables plus dairy and fresh produce. Individuals may receive an emergency food box quarterly. Those coming to our door also meet with a program staff member to discuss the client’s specific needs and refer them to one of our Partner Agencies.

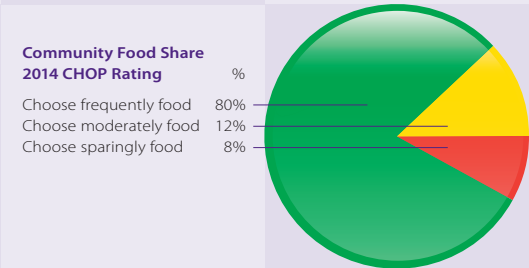


A NATIONAL LEADER IN FOCUSING ON NUTRITION

In the early decades of food banking, 1980-2000, food banks across the country emphasized food procurement and food rescue, and distribution through networks of other nonprofit agencies serving people in need of food assistance. As the industry grew, focus turned to acquiring more nutritious food and tracking the results. We are very proud to say that since 2000, Community Food Share has been a national leader in focusing on nutrition in food procurement and distribution.

2000 Community Food Share institutes tracking of food procurement and distribution to targets in the USDA Food Guide Pyramid.

2012 Community Food Share implements the CHOP (Choosing Healthy Options) nutritional rating system. Approximately 80% of the food procured is rated using CHOP.

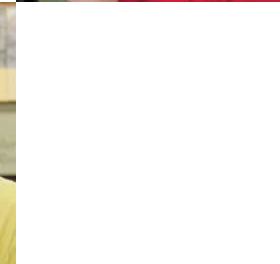
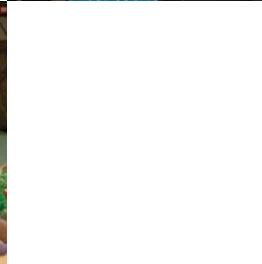


Community Food Share adopts “Nutritional Policy Statement” to guide food procurement decisions; 30% of total food procurement is fresh produce.

**COMMUNITY FOOD SHARE VOLUNTEERS —
THE ❤️ OF COMMUNITY FOOD SHARE**

**The saying around here has long been —
“we couldn’t open the doors without them!”**

Volunteers help us in every area of the organization, including sorting food, stocking the warehouse, picking up and delivering food to our partner agencies as well as board service and a variety of administrative jobs. In FY14, 2,200 devoted people donated 32,000 hours of their time, talent and energy to help us ensure that no one in our community goes hungry. That’s the equivalent of 15 staff members!



STATEMENT OF FINANCIAL ACTIVITIES

For the Twelve Months Ending June 30, 2014

REVENUE AND SUPPORT

Local Government Grants	121,013
Federal Grants	7,730
United Way Grant	12,807
Contributions / Annual Fund	2,515,469
Special Events, Net	432,793
Agency Membership Fees	12,000
State of Colorado — TEFAP	21,800
Interest Income	1,277
Lease Revenue	105,704
Miscellaneous Income	849
Value of Donated Food	14,694,662
In-Kind Goods & Services	35,120

Total Operating Income \$17,961,224

EXPENSES

Food Acquisition Expense	796,731
Personnel Expenses	1,387,626
Occupancy & Insurance	161,555
Vehicle Expense	57,188
Warehouse Equipment & Supplies	12,136
Office Expense	64,641
Fundraising Activities	157,747
Administrative Expense	29,828
Other Expenses	36,026
Donated Food Distributed	14,522,214
Accrued Personnel Expenses	15,326
In-Kind Goods & Services	21,137
Depreciation	216,285

Total Operating Expenses \$17,478,440

Operating Gain 482,784

Gain on Niwot Building Sale 527,163

Total Organization

Gain/(Loss) \$ 1,009,947

STATEMENT OF FINANCIAL POSITION

ASSETS

Current Assets

Checking Account	\$ 98,104
Construction Draw — 1stBank	147,425
Investments/Reserves	2,588,566
Gift Cards & Petty Cash	126
Accounts Receivable	86,098
Pledges Receivable	0
Capital Campaign Pledges	149,000
Grants Receivable	109,044
Food Inventory	444,711
Total Current Assets	\$ 3,623,074

Fixed Assets

Buildings	4,909,178
Land	725,194
Trucks & Equipment	684,155
Accumulated Depreciation	(632,539)
Total Fixed Assets	\$ 5,685,988

Total Assets \$9,309,062

LIABILITIES AND NET ASSETS

Current Liabilities

Accounts Payable	\$ 45,109
Payroll-Related Accruals	96,631
Tenant Security Deposit	12,500
Deferred Revenue	7,000
Total Current Liabilities	\$ 161,240
Long-Term Liabilities	0

Total Liabilities \$ 161,240

Net Assets

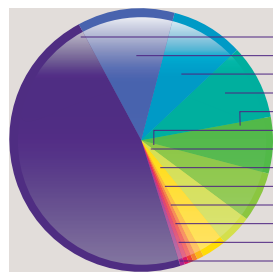
Operating Reserve	812,837
Capital Reserve	546,648
Other Unrestricted Net Assets	7,639,337
Total Unrestricted Net Assets	\$ 8,998,822

Total Temporarily Restricted Net Assets \$ 149,000

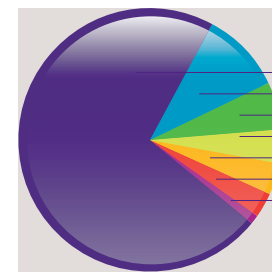
Total Permanently Restricted Net Assets \$ 0

Total Net Assets \$9,147,822

Total Liabilities and Net Assets \$9,309,062



Sources of Cash Support	\$	%
Individual Contributions	1,526,100	47%
Corporations/Business	395,536	12%
Foundations	298,697	9%
Corporate Challenge	285,009	9%
3rd Party Events	232,111	7%
CFS Special Events	200,682	6%
Local Government Grants	121,013	4%
Lease Revenue	105,704	3%
Program Service Revenue	33,800	1%
United Way Grant	12,807	<1%
Faith Community	10,127	<1%
Federal Grants	7,730	<1%
Investment & Other Income	2,126	<1%
Total	3,231,442	100%



Food Donation Sources	\$	%
Local Donors	6,540,921	72%
Feeding America	886,608	10%
Purchased	569,808	6%
Food Drives	407,682	4%
USDA	406,178	4%
Other Affiliates	242,276	3%
Gleaning	64,763	1%
Total	9,118,236	100%

SHARING OUR NEW SPACE FOR COMMUNITY OUTREACH

In the new building we have several rooms that can be used for community outreach and activities. Already in FY14, we have held:

Infancy - 6 Years Symposium. Coordinated by Community Food Share staff, this symposium brought together many service providers working with this population to explore their needs and how best to address them.

SNAP-Ed Cooking Classes. Weekly sessions were held teaching clients how to eat nutritiously and maintain healthy lifestyles. The classes were coordinated by SNAP (Supplemental Nutrition Assistance Program).

Client Resource Fair. Coordinated by Community Food Share staff, many organizations serving low-income people were available to meet with clients and inform them of services available.



Client Resource Fair



Infancy - 6 Years Symposium



SNAP-Ed Nutritional Cooking Classes



Client Resource Fair

Partner Agencies

Addiction Recovery Center
 Allenspark Community Cultures Council
 Attention Homes
 Boulder County AIDS Project
 Boulder County Housing Authority
 Boulder Preparatory High School
 Boulder Shelter for the Homeless
 Bridge House
 Broomfield FISH
 Calvary Baptist Church of Longmont
 Children's House Preschool
 Cinnamon Park
 Coal Creek Meals on Wheels
 Ed & Ruth Lehman YMCA
 Emergency Family Assistance Association
 First Congregational Church
 Good News Center
 Harvest of Hope
 Heritage House Ministries
 I Have A Dream Foundation
 Imagine!
 Justice High School
 Lafayette Library Homework Center
 Lamb's Ministry
 Louisville Community Food Bank
 Lyons Community Food Pantry
 Meals on Wheels of Boulder
 Mental Health Partners
 Mountain States Children's Home
 Mt. Hope Lutheran Preschool
 Nederland Presbyterian Church
 North Denver Cares Food Pantry
 OUR Center
 Real Choices
 Safe Shelter of St. Vrain Valley
 Safehouse Progressive Alliance for Nonviolence
 Shekinah Ministries
 Shining Stars Learning Center
 Sister Carmen Community Center
 St. John the Baptist Catholic Church
 Teens, Inc.
 The Inn Between Of Longmont, Inc.
 There With Care Foundation
 Vinlife Community Church
 Westview Presbyterian Church
 Wild Plum Center
 YMCA of Boulder Valley
 YWCA of Boulder County

Board of Directors

Tom Metzger, *Chair*
 Molly Keveney, *Chair-Elect*
 Rebecca Hall, *Secretary*

Board Members

Courtney Banayad
 Claudia Barkmeier
 Mark Biggers
 Jim Hall
 Michael Hranicka
 Brian Larson
 Kristin Macdonald
 Gordon Pedrow
 Peter Storz
 Matt Zavala

Staff

Joshua Arensdorf
Driver/Warehouseperson
 Jim Baldwin
Chief Executive Officer
 Danielle Bock
Disaster Relief Manager
 Fred Brock
Driver/Warehouseperson
 Gerry Bristow
Finance, IT & Human Resources Director
 Inocencia Chaparro
Direct Distribution Assistant
 Jayson Conover
Driver/Warehouseperson
 Carol Cortez-Sagor
Direct Distribution Coordinator
 Jim Cowan
Driver/Warehouseperson
 Sue Ericson
Volunteer Manager
 Susan Finesilver
Communications & Corporate Relations Manager
 Debbie Gill
Donor Services Coordinator
 Jay Halsey
Utility Warehouseperson
 Michele Harvey
Agency & Programs Manager
 Katie Koralesky
Agency & Programs Coordinator
 John Kaufman
Warehouse/Distribution Manager
 Sam Miller
Receptionist/Administrative Assistant
 Tammy Palombo
Data Manager & Events Coordinator
 Abel Ramirez
Driver/Warehouseperson
 Tom Reed
Food Procurement Manager
 Dave Richey
Warehouse Coordinator
 Christina Sarellano
District Distribution Assistant
 Anne Shanahan
Special Projects Coordinator
 Michael StaffordCrane
Operations Director
 Stephen Stroh
Custodian
 Terry Tedeschi
Development & Marketing Director



Foothills United Way



COMMUNITY FOOD SHARE

650 South Taylor Avenue
Louisville, CO 80027

303.652.3663

720.864.8020 fax

www.communityfoodshare.org

Facebook: www.Facebook.com/CommunityFoodShare

Twitter: @CommFoodShare