

Annual Report

Fiscal Year 2016

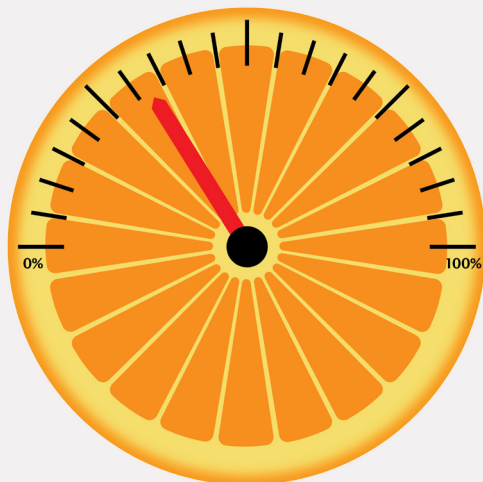
Our Mission

To be a leader in our community's effort to end hunger in Boulder and Broomfield Counties



9.1 TOTAL
MILLION POUNDS
DISTRIBUTED

PERCENT OF
DISTRIBUTED
FOOD THAT
WAS PRODUCE:



GOAL: 25%
ACTUAL: 32%

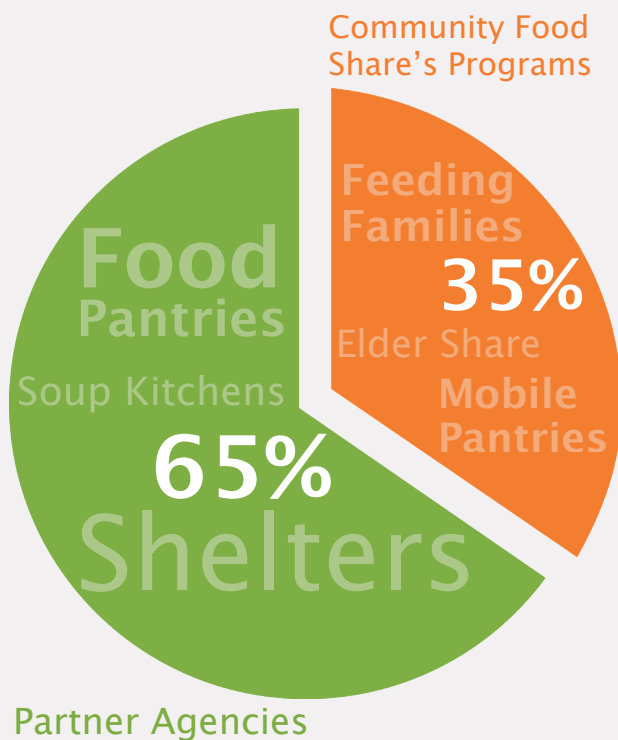
PERCENT OF
DISTRIBUTED
FOOD THAT
WAS PROTEIN:



GOAL: 37%
ACTUAL: 44%

Statement of Financial Activities

WE GET FOOD TO
THOSE WHO NEED IT
IN TWO WAYS:



SUPPORT & REVENUE

Contributions	\$2,107,736
Grants	\$335,909
Government	\$140,841
Special Events (Net)	\$206,728
Earned Income	\$132,439
CASH SUBTOTAL	\$2,923,653
Food Donations & Other Non-Cash Support	\$14,971,572
TOTAL	\$17,895,225

EXPENSES

Program Services	\$1,939,473
Fundraising	\$525,617
Administration	\$379,504
CASH SUBTOTAL	\$2,844,594
Food Distributed & Other Non-Cash Expenses	\$15,156,193
TOTAL	\$18,000,787
CHANGE IN NET ASSETS	(\$105,562)

Based on audited financial statements ending June 30, 2016.

“Thank you for all that you do. It’s such a beautiful service that you provide to the community. We had a week where we had nothing, and Community Food Share made all the difference.”

-A mom who visits Feeding Families,
CFS’s onsite pantry